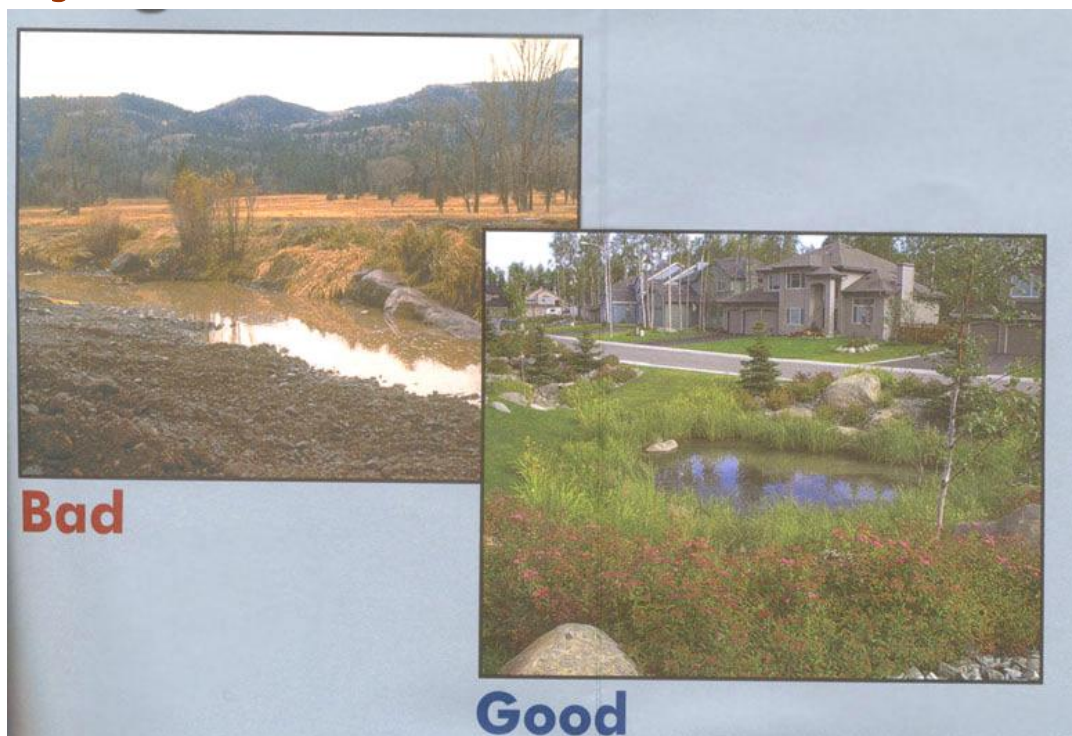


# BEST MANAGEMENT PRACTICES

## Vegetative Buffers



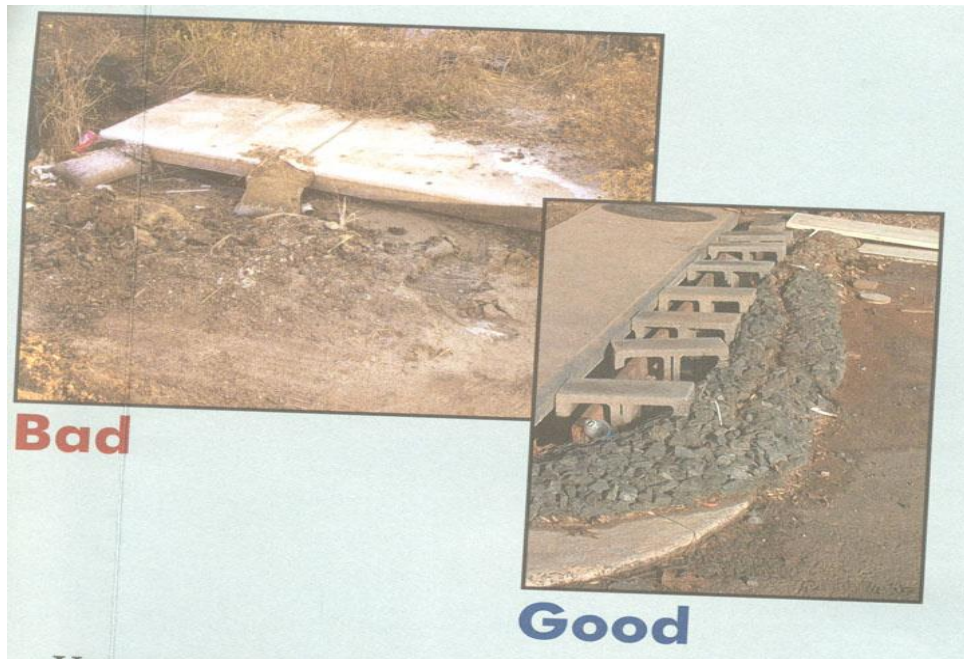
- Protect and install vegetative buffers along waterbodies to slow and filter stormwater runoff.
- Maintain buffers by mowing or replanting periodically to ensure their effectiveness.

## Site Stabilization



- Vegetate, mulch, or otherwise stabilize all areas as soon as land alterations have been completed.

## Storm Drain Inlet Protection



- Use rock or other appropriate material to cover the storm drain inlet to filter out trash and debris.
- Make sure the rock size is appropriate (usually 1 to 2 inches in diameter).
- If you use inlet filters, maintain them regularly.

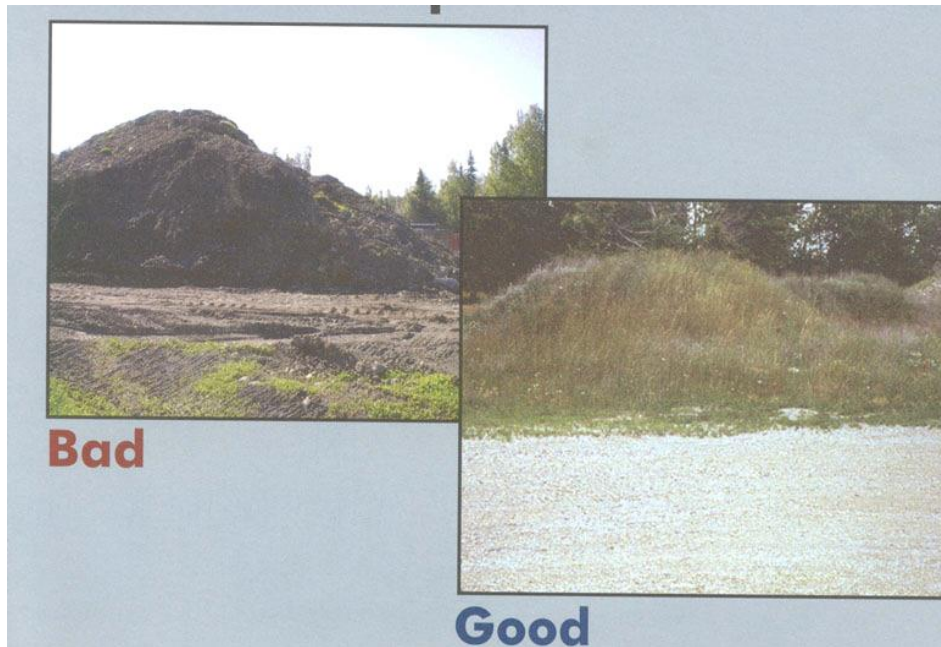
## Slopes



- Rough grade or terrace slopes.
- Break up long slopes with sediment barriers, or under drain, or divert water away from slopes.

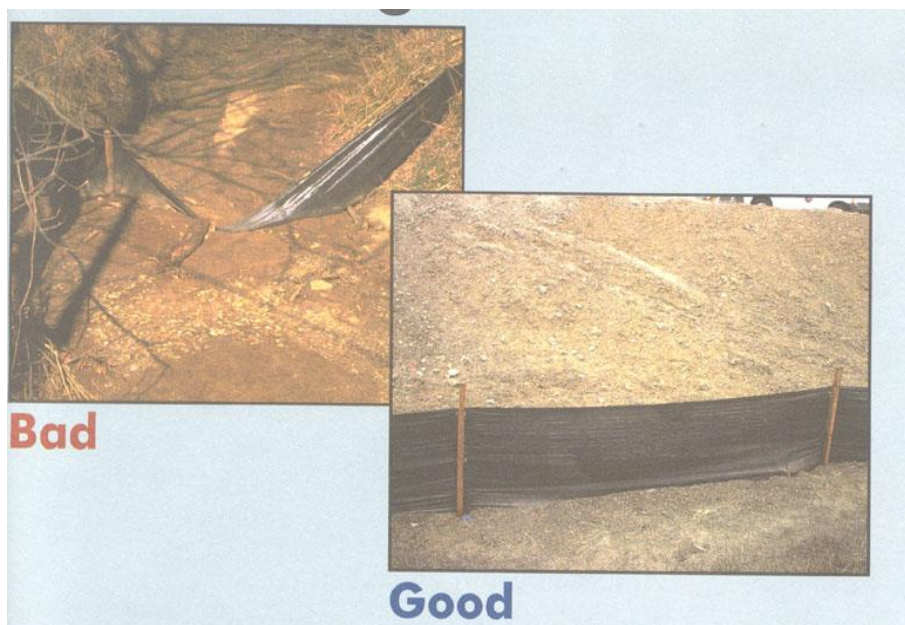


## Dirt Stockpiles



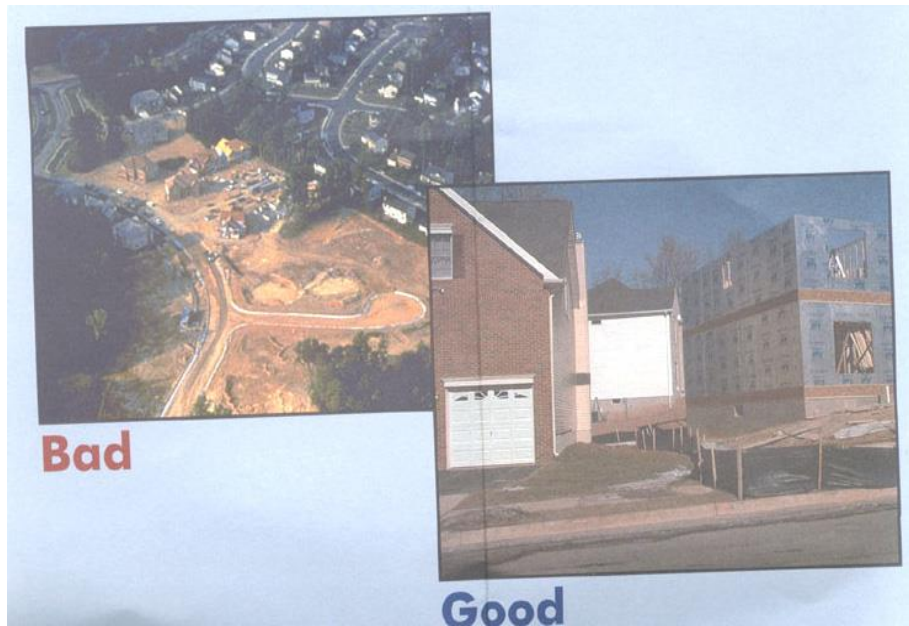
- Cover or seed all dirt stockpiles.

## Silt Fencing



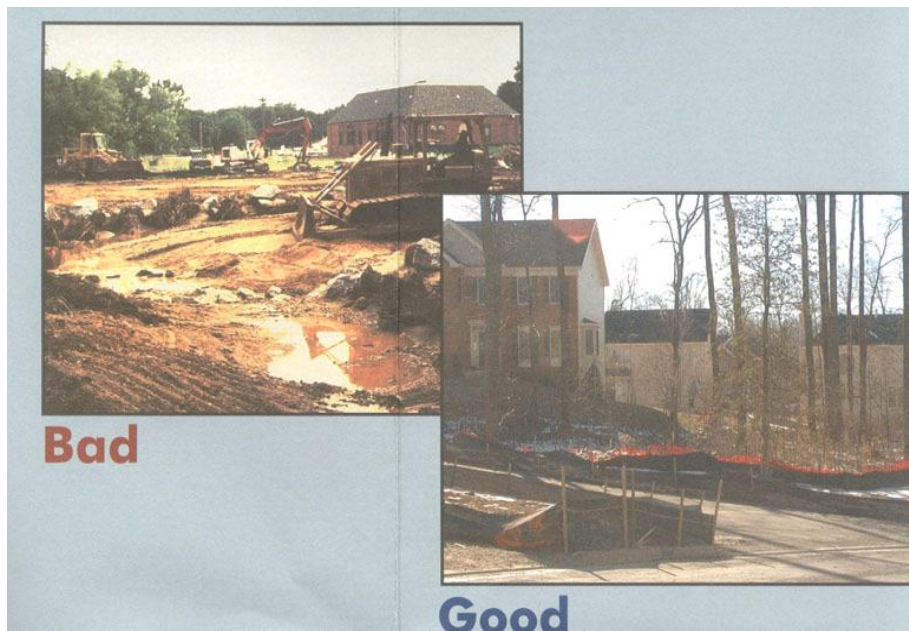
- Inspect and maintain silt fences after each rainstorm.
- Make sure the bottom of the silt fence is buried in the ground.
- Securely attach the materials to the stakes.
- Don't place silt fences in the middle of waterways, or use them as a check dam.
- Make sure stormwater is not flowing around the silt fence.

## Construction Phasing



- Sequence construction activities so that soil is not exposed for long periods of time.
- Schedule or limit grading to small areas.
- Install key sediment control practices before site grading begins.
- Schedule site stabilization activities, such as landscaping, to be completed immediately after the land has been graded to its final contour.

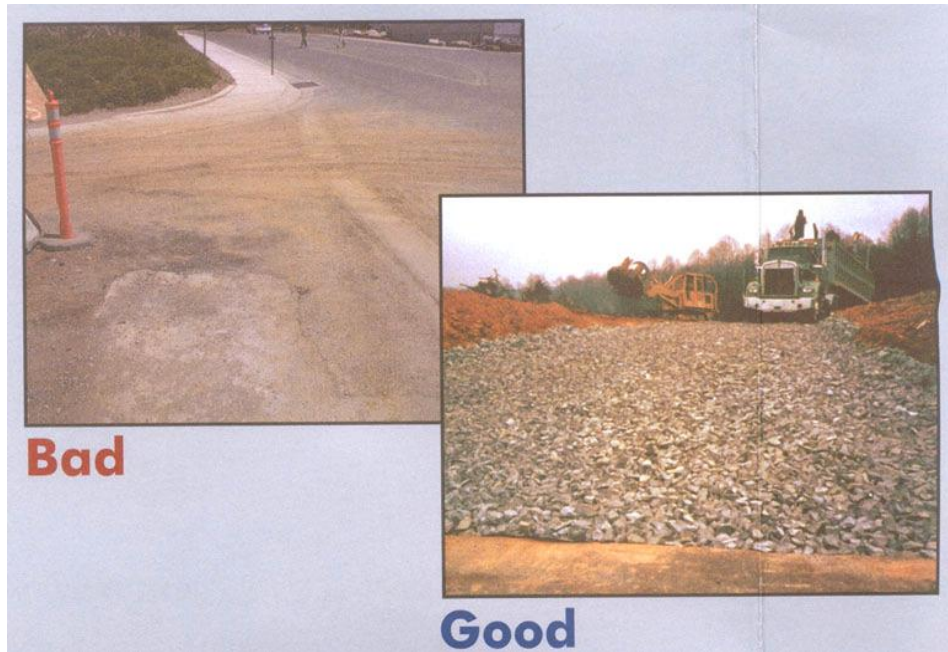
## Protect Natural Features



- Minimize clearing.
- Minimize the amount of exposed soil.
- Identify and protect areas where existing vegetation, such as trees, will not be disturbed by construction activity.

- Protect streams, stream buffers, wild woodlands, wetlands, or other sensitive areas from any disturbance by fencing or otherwise clearly marking these areas.

## Construction Entrances



- Remove mud and dirt from tires or construction vehicles before they enter a paved roadway.
- Properly size entrance BMPs for all anticipated vehicles.
- Make sure that the construction entrance does not become buried in soil.